



BRITISHROWING

Playing your part: Getting your club back up and running safely

Darrel Samanjoul, Kat Carlyle & Nick Steel

BRITISH ROWING
LOCKDOWN WEBINARS



IN ASSOCIATION WITH

THE POWER TO KNOW.

Note from Andy Parkinson, CEO at British Rowing

At the beginning of the month we celebrate National Volunteer Week, so it feels highly appropriate to thank the many volunteers in clubs who have worked tirelessly to ensure that their clubs and their members are supported through this difficult period. Implementing processes to enable a return to rowing are complicated and may take time to put in place.

At the same time, some volunteers may have been affected directly or indirectly by the virus and so rowing may well not be top of their priority list right now. So, if you are a member of a rowing club, please remember to say thank you to all the great volunteers who support our sport, both in times of crisis and once we return to whatever normal looks like in the future.

Volunteer action plan - in development

Drawing on the research findings and input from the Volunteer Working Group, emerging recommendations and actions are grouped in these workstreams;

- 1. Attracting new volunteers.**
- 2. Training volunteers and supporting clubs and competition organisers.**
- 3. Acknowledging the contributions made.**

Regional Rowing Council - Overview



ARTICLES OF ASSOCIATION OF BRITISH ROWING LIMITED

Definitions

1. In these Articles the words standing in the first column of the Table next hereunder (hereinafter referred to as the meaning set opposite to them respectively in the second column thereof) if not inconsistent with the subject or context:

Word(s)	Definition
Act	The Companies Act 2006 and any subsequent statutory modification or re-enactment thereof for the time being in force.
Affiliated Member	A Club or Competitor that becomes affiliated to British Rowing after having obtained its permission to do so.
Annual General Meeting	An annual meeting of Members as provided for in these Articles.
Articles	These Articles of Association.
Officer	A member or former member of the GB Rowing Team who is currently competing for the GB Rowing Team or was a member of the GB Rowing Team in the most recent Olympic Cycle (being the four year cycle in which the first year is the calendar year in which the summer Olympic Games are due to take place) and elected as a Director by the GB Rowing Team.
Board	The Board of Directors for the time being of British Rowing that has overall responsibility for governing British Rowing.
British Rowing	British Rowing Limited.
Chair	The Chair of the Board.
Chief Executive Officer	The Chief Executive Officer for the time being of British Rowing.
Club	A club in the United Kingdom whose members take part in Rowing.
Deputy Chair	The Deputy Chair of the Board elected to the Board by the Members.
Director	A Director of British Rowing.
First Rowed Club	The Club owned by a Registered Individual when registering with British Rowing to be the primary Club that the Registered Individual participates in as a member of crew.

Approved 2004/12/20/05



CORPORATE GOVERNANCE HANDBOOK - SECTION C – BRITISH ROWING CONSTITUTION

British Rowing has developed a sporting democracy structure within England based on ten designated geographical areas, referred to as Regions. Each Region has a Regional Rowing Council, which has the responsibilities detailed in the British Rowing Regulations. **The Affiliated Members of British Rowing (being Rowing Clubs and Competition Organisers) within each Region elect the leadership personnel of each Regional Rowing Council, and also one or more Regional Representatives for their Region. These Regional Representatives are the Members of British Rowing, with the right to vote on resolutions at General Meetings of British Rowing.**

17. Regions and Regional Rowing Councils:

17.1. British Rowing has designated ten Regions within England, being:

17.1.1. East Midlands
17.1.2. Eastern
17.1.3. North West
17.1.4. Northern
17.1.5. Thames

17.1.6. Wessex & South East Coast
17.1.7. West
17.1.8. West Midlands
17.1.9. Wiltshire, Avon, Gloucestershire and Somerset (WAGS)
17.1.10 Yorkshire

17.2. The boundaries of each Region are defined by river basins and by the location of Affiliated Members who are members of the Region. Any changes to the boundaries of a Region shall be recommended by the Regional Chair's Forum to the Board for their agreement.

17.3. **A Regional Rowing Council, as further provided for in the British Rowing Regulations, shall administer each Region.**

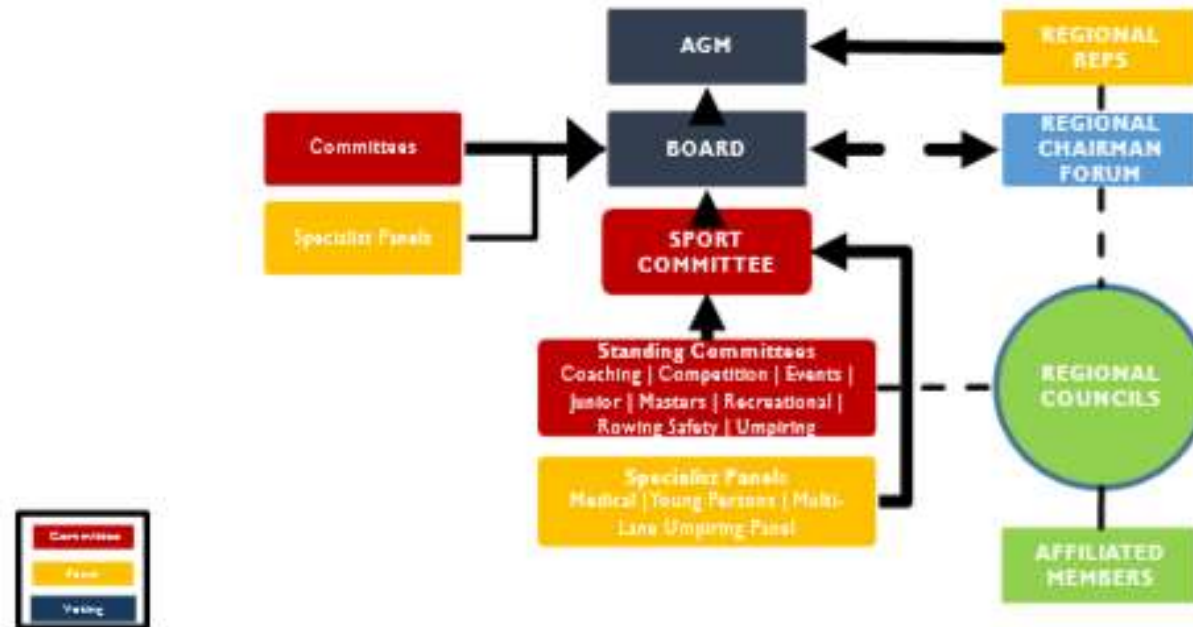
17.4. Model Constitutions

17.4.1. **Model constitutions for Regional Rowing Councils shall be issued and reviewed from time to time by the Board.** These shall embody the principles of transparent financial accounting; democracy and clear roles and responsibilities and accountability; and a fair and open disciplinary system.

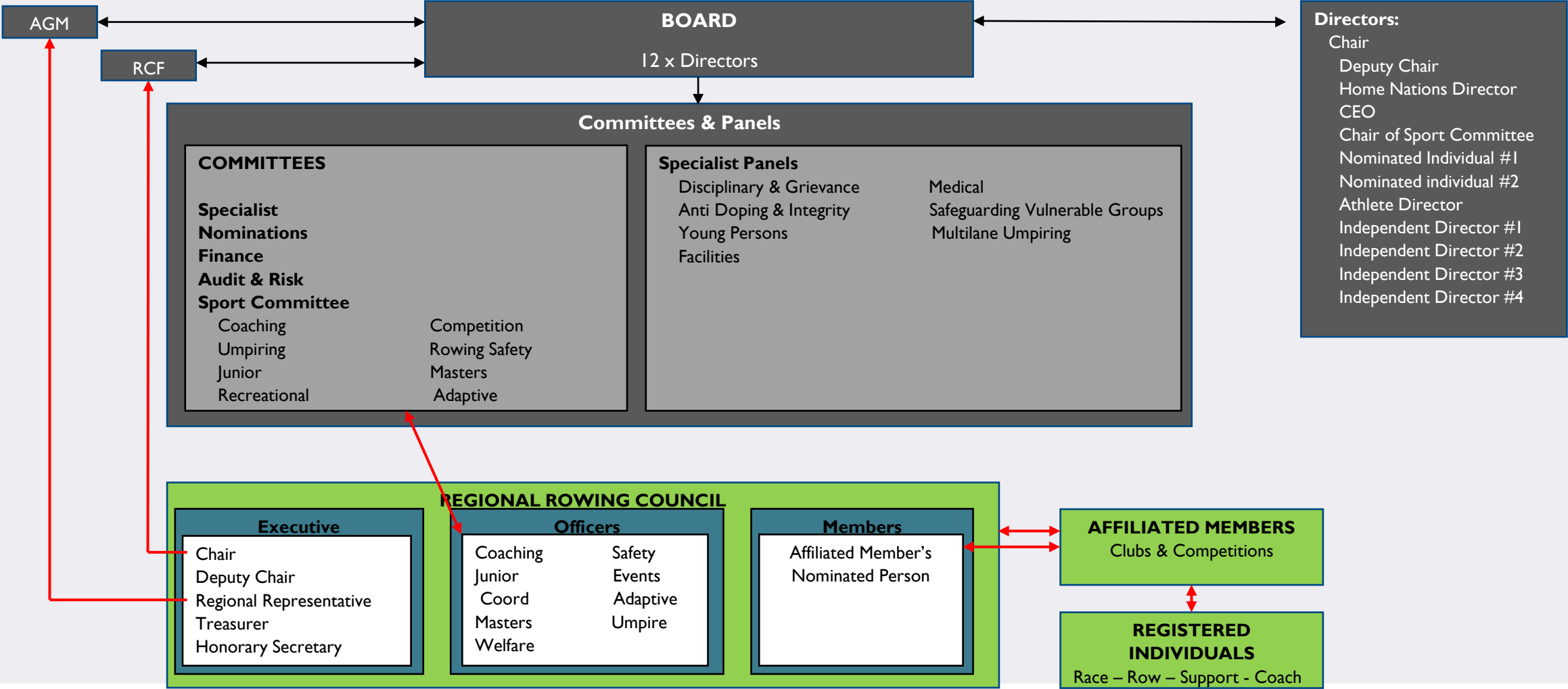
17.4.2. The Board may also issue model constitutions for Clubs.

Corporate Governance Handbook (pg3)

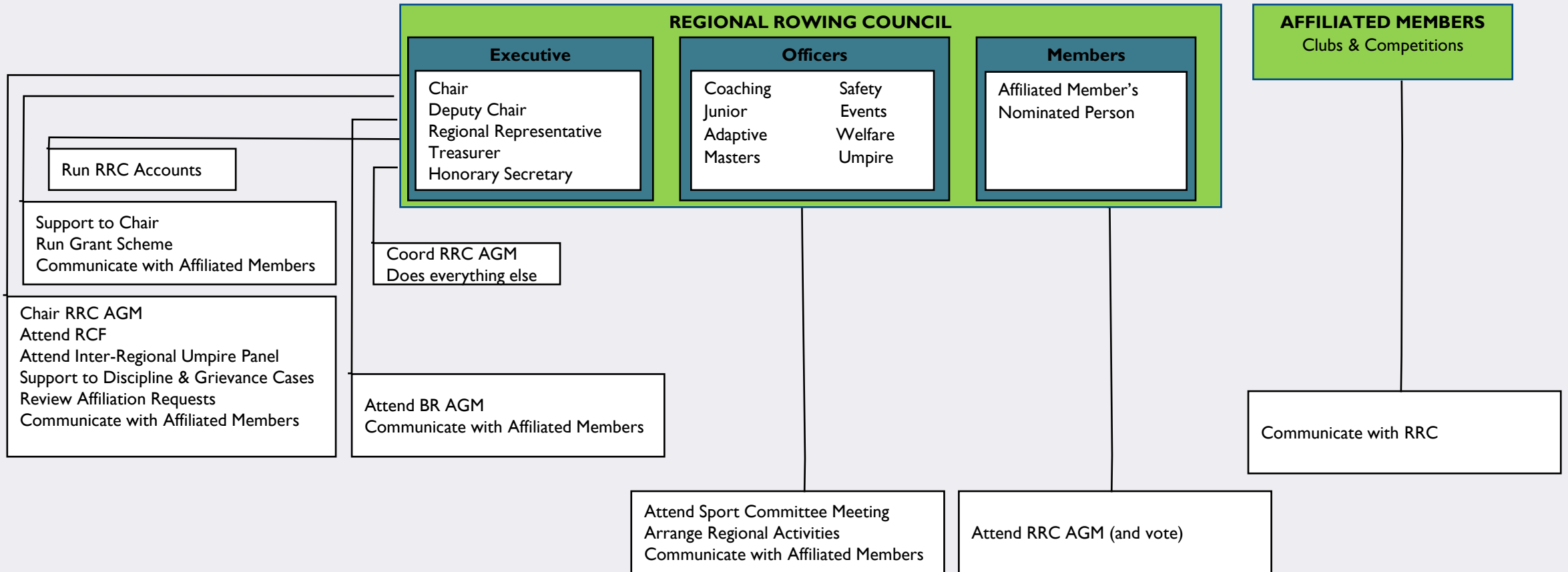
A diagram setting out British Rowing's governance structure is set out below.



Regional Rowing Council Interactions



Regional Rowing Council Activities



Safe return to rowing at Maidenhead
Nick Steel (Club Captain)
30th June 2020

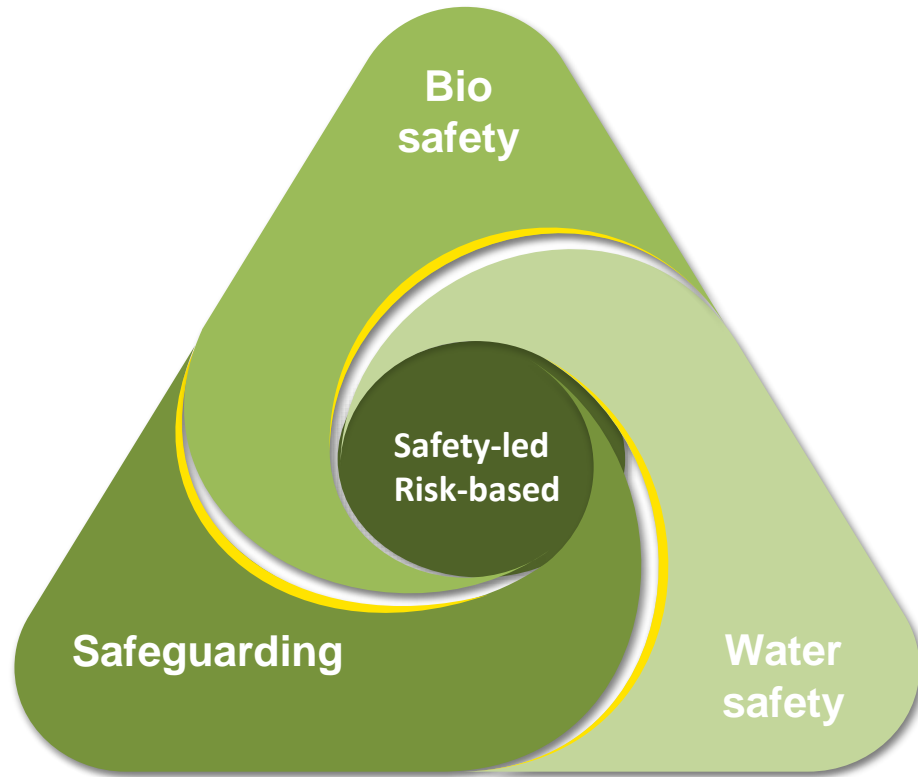




Maidenhead Rowing Club aims to provide a friendly, safe and supportive environment for Members of all ages and ambitions to pursue the sport and fellowship of rowing to the best of their ability.



Principles-based approach



Key principles

1. Follow Government, British Rowing, & Environment Agency guidance
2. Cautious, safety-led, risk-based approach
3. Build on existing safety & safeguarding protocols
4. Additional Health risk management via Risk Assessment
5. Phased process, learning & adapting

Maidenhead Rowing Club




 BRITISH ROWING
 ENGLAND'S REGIONAL
 ROWING COUNCIL

MAKE SURE YOU WASH YOUR BOAT AND BLADES THOROUGHLY

PAY SPECIAL ATTENTION TO TOUCH POINTS :

 BLADE HANDLES	 SEAT & HATCH COVER	 FOOTPLATE & BOLTS
 SAXBOARDS	 TRESTLES	 GATES

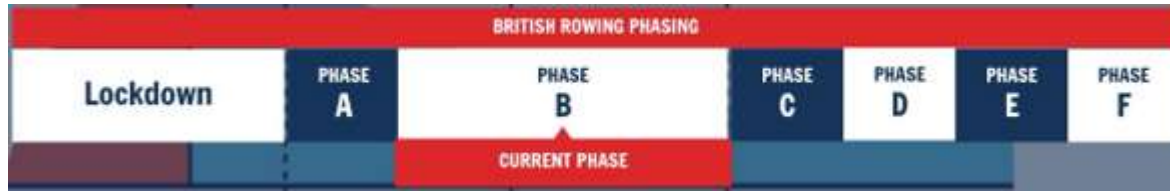
CLEAN WHAT YOU TOUCH :

 TOOLS	 KEYS	 PADLOCKS
 DOOR HANDLES	 TAPS & HOSEPIPE	 LIGHTSWITCHES

NOW WASH YOUR HANDS



Safe Return to Rowing



Wave 1 (16 May)

Private singles (seniors & J16+)

Wave 2 (31 May)

Club singles (seniors)
Household crew boats

Wave 2a (14 June)

Club singles (J16+)

Wave 3 (22 June)

Club singles (<J16)
"Shielders"

Squad	11-May	18-May	25-May	01-Jun	08-Jun	15-Jun	22-Jun	29-Jun
Snr Men	[Green bar]							
Snr Women	[Green bar]							
Vet Men	[Green bar]							
Mas Women	[Green bar]							
Adaptive	[White bar]			[Green bar]				
Rec.	[White bar]			[Green bar]				
Daytime	[White bar]			[Green bar]				
J/WJ 16-18	[Green bar]							
J14-15	[White bar]						[Green bar]	
WJ14-15	[White bar]						[Green bar]	
J Beg	[White bar]						[Green bar]	
"Shielders"	[White bar]						[Green bar]	



Volunteers enable ...





Volunteering at Bewdley Rowing Club



I have been a member at Bewdley Rowing Club since June 2008 and a volunteer since a month later!

My volunteering started like many others on the tea tent at the regatta and taking drinks to the umpires along the course.

When I realised I was into rowing for the long game this quickly turned into helping out wherever I could.



**Cleaner
Bar Work
Committee Member
Cox
Ergo Monitor**

to start...



Then as well as those:

**Ladies Rep
Coach
Membership Secretary
Club Admin
Vice Captain
Captain
Regatta Secretary**

Oh and rower!

My volunteering doesn't stop there, I'm also Regional Coaching Rep for West Mids

I'm not the only volunteer at Bewdley there's plenty more and we all know how important volunteers are to keep a club running, without them most clubs couldn't exist.



During lockdown and the
return to rowing



**We have loaned out our ergos and some free weights on a rota basis.
I created a spreadsheet and contacted members to tell them when it was time to pass the ergo on.**

The ergos are still on loan and will continue to be until the gym is allowed to be opened up again.



Phase 1

Private singles were allowed back on the water, via a booking system.

Providing they were paid members of both the club and British Rowing, had signed a declaration form and could competently get themselves on and off the water.

Phase 2

Allocated club singles to competent scullers who followed the same rules above.



Phase 3

Scullers who require assistance getting on and off the water via a member of the same household, plus doubles with members of the same household. All following the same rules above.



All club facilities closed in March and remain closed. Sculling boats were moved out of the boathouse on to the patio in a controlled manner and continue to be racked outside to avoid needing any access to the facilities.

Social distancing rules are in place

Sanitizer stations have been set up along with various instruction posters.

Members bring their own washing equipment to clean the boats after use, we are not sharing boats currently.

Policy Committee have regular Zoom meetings and keep in contact via a WhatsApp group.

Constant communication is sent out to the membership via email and Facebook

Following the latest government update, we are looking at ways in which we can open up our bar again.





BRITISHROWING

Questions?

**BRITISH ROWING
LOCKDOWN WEBINARS**



IN ASSOCIATION WITH

THE POWER TO KNOW.



BRITISHROWING

Playing your part: Getting your club back up and running safely

Thank you!

BRITISH ROWING
LOCKDOWN WEBINARS



IN ASSOCIATION WITH

THE POWER TO KNOW.